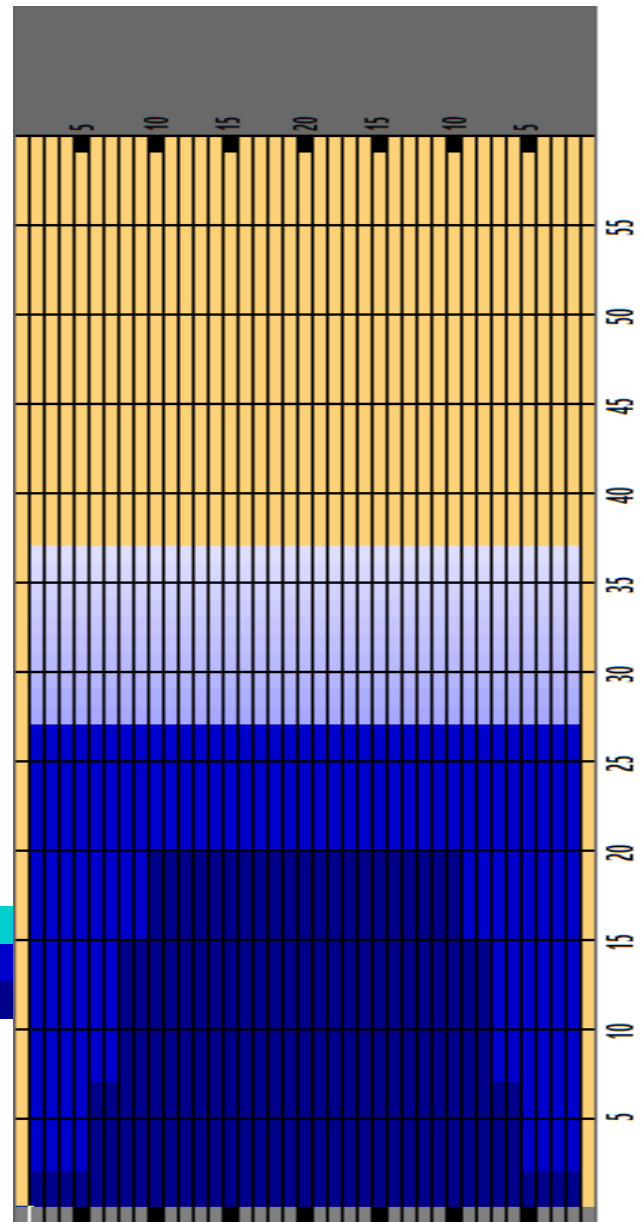


Oil Pattern Distance	37	Reverse Brush Drop	28	Oil Per Board	Multi ul
Forward Oil Total	7.47 mL	Reverse Oil Total	20.35 mL	Volume Oil Total	27.82 mL
Tank Configuration	N/A	Tank A Conditioner	FIRE	Tank B Conditioner	ICE

	START	STOP	LOADS	MICS	SPEED	BUFFER	TANK	CROSSED	START	END	FEET	T.OIL
1	2L	2R	2	30	18	3	A	74	0.0	2.5	2.5	2220
2	6L	6R	2	30	18	3	A	58	2.5	7.6	5.1	1740
3	8L	8R	3	30	18	3	A	75	7.6	15.2	7.6	2250
4	10L	10R	2	30	18	3	A	42	15.2	20.3	5.1	1260
5	2L	2R	0	30	22	3	A	0	20.3	37.0	16.7	0

	START	STOP	LOADS	MICS	SPEED	BUFFER	TANK	CROSSED	START	END	FEET	T.OIL
1	2L	2R	0	55	30	3	B	0	37.0	27.0	-10.0	0
2	2L	2R	5	55	18	3	B	185	27.0	14.3	-12.7	10175
3	2L	2R	5	55	14	3	B	185	14.3	4.4	-9.9	10175
4	2L	2R	0	30	14	3	B	0	4.4	0.0	-4.4	0



Cleaner Ratio Main Mix 5:1 Forward

Cleaner Ratio Back End Mix 5:1 Reverse

Cleaner Ratio Back End Distance 59 Combined

Buffer RPM: 4 = 720 | 3 = 500 | 2 = 200 | 1 = 50

Item	3L-7L:18L-18R	8L-12L:18L-18R	13L-17L:18L-18R	18L-18R:17R-13R	18L-18R:12R-8R	18L-18R:7R-3R
Description	Outside Track:Middle	Middle Track:Middle	Inside Track:Middle	Middle: Inside Track	Middle:Middle Track	Middle:Outside Track
Track Zone Ratio	1.29	1.03	1	1	1.03	1.29

