

2011 Sea Games-Short



Oil Pattern Distance:	35 Feet	Reverse Brush Drop:	29 Feet	Oil Per Board:	50 uL
Forward Oil Total:	11.35 mL	Reverse Oil Total:	11.35 mL	Volume Oil Total:	22.7 mL
Forward Boards Crossed:	227 Boards	Reverse Boards Crossed:	227 Boards	Total Boards Crossed:	454 Boards

	Start	Stop	Loads	Speed	Crossed	Start	End	Feet	T.Oil
1	2L	2R	2	18	74	0.0	2.5	2.5	3700
2	4L	4R	1	18	33	2.5	5.0	2.5	1650
3	5L	5R	2	18	62	5.0	10.1	5.1	3100
4	6L	6R	2	18	58	10.1	15.2	5.1	2900
5	2L	2R	0	22	0	15.2	30.0	14.8	0
6	2L	2R	0	30	0	30.0	35.0	5.0	0

Navigation: Forward Reverse More

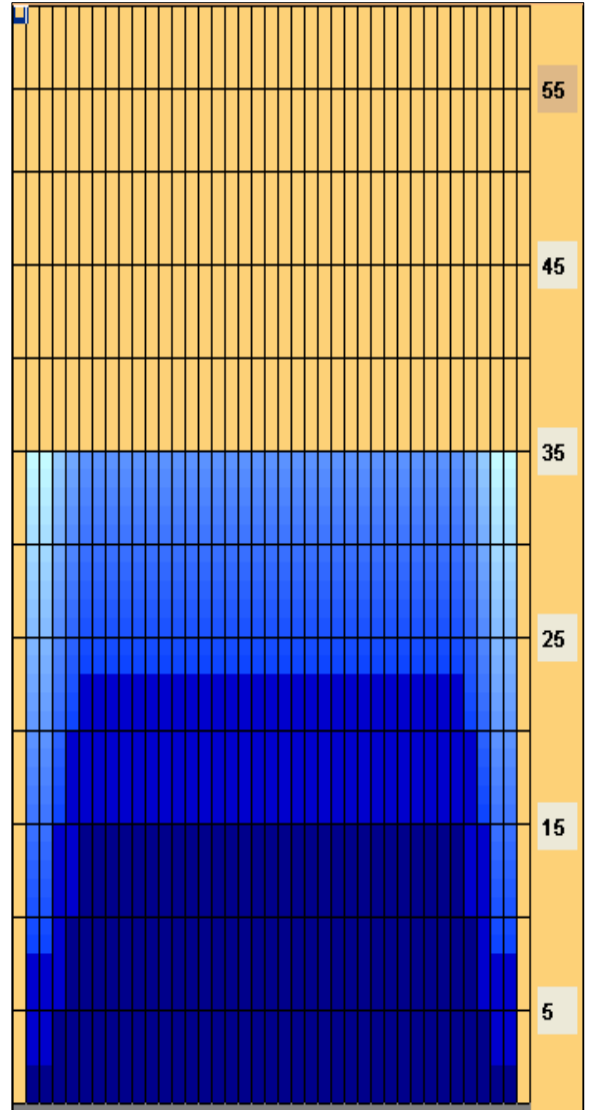
	Start	Stop	Loads	Speed	Crossed	Start	End	Feet	T.Oil
1	2L	2R	0	30	0	35.0	23.0	-12.0	0
2	6L	6R	1	18	29	23.0	20.5	-2.5	1450
3	5L	5R	2	18	62	20.5	15.4	-5.1	3100
4	4L	4R	3	18	99	15.4	7.8	-7.6	4950
5	2L	2R	1	18	37	7.8	5.3	-2.5	1850
6	2L	2R	0	14	0	5.3	0.0	-5.3	0

Navigation: Forward Reverse More

Conditioner:
Type In or Select One

TransferType:
Type In or Select One

- Forward
- Reverse
- Combined
- Buff



Item	3L-7L:18L-18R	8L-12L:18L-18R	13L-17L:18L-18R	18L-18R:17R-13R	18L-18R:12R-8R	18L-18R:7R-3R
Description	Outside Track:Middle	Middle Track:Middle	Inside Track:Middle	Middle: Inside Track	Middle:Middle Track	Middle:Outside Track
Track Zone Ratio	1.43	1	1	1	1	1.43

